



Riad Villas

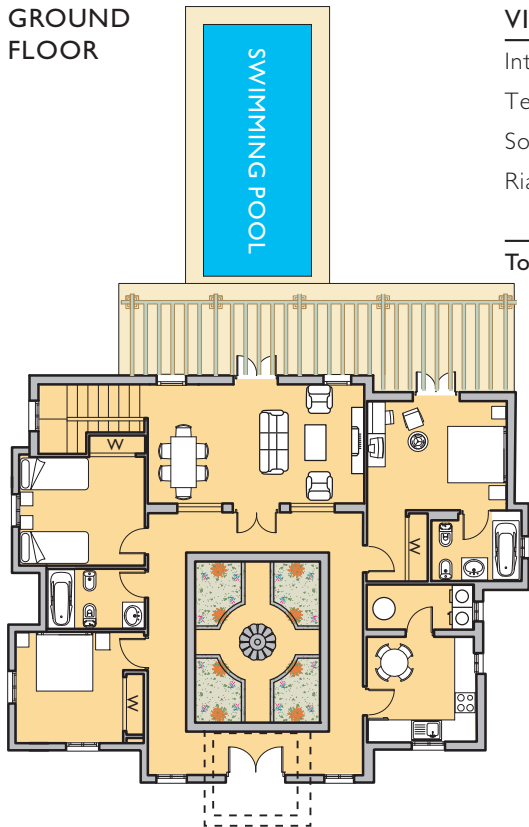
Type RU1 (4 Bed)

The Fairways floor plan illustrates a typical Type RVI (4 Bed)



FRONT VIEW

GROUND FLOOR

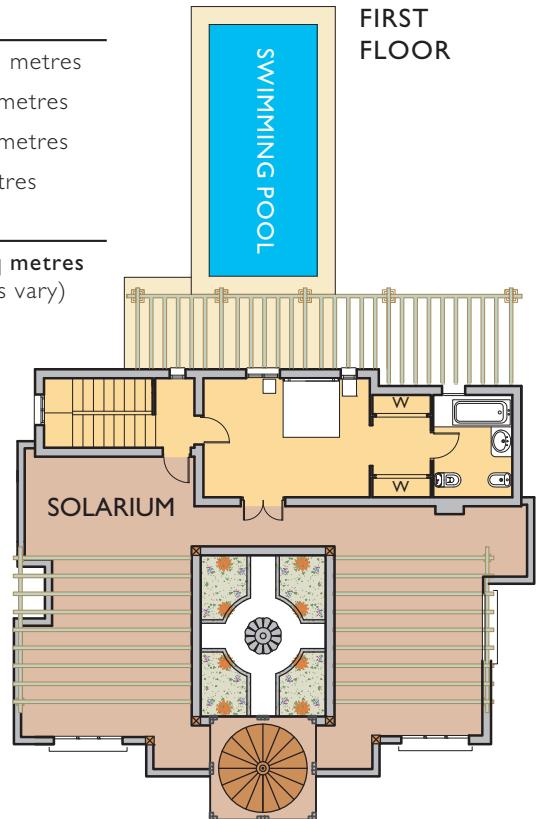


VILLA DIMENSIONS

Internal Build:	175.30 sq metres
Terraces:	28.04 sq metres
Solarium:	70.95 sq metres
Riad Courtyard:	16 sq metres

Total Build: 290.29 sq metres
(Plot sizes vary)

FIRST FLOOR





Riad Villas

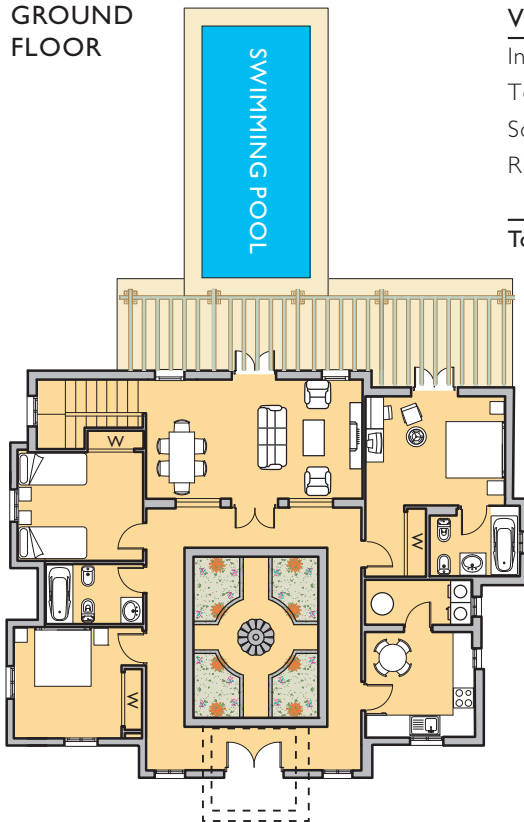
Type RV2 (3 Bed)

The Fairways floor plan illustrates a typical Type RV2 (3 Bed)



FRONT VIEW

GROUND FLOOR



VILLA DIMENSIONS

Internal Build:	143.40 sq metres
Terraces:	28.04 sq metres
Solarium:	100.35 sq metres
Riad Courtyard:	16 sq metres

Total Build: 287.79 sq metres
(Plot sizes vary)

FIRST FLOOR

